



Killick Way, London, E1

BUTLER & STAG



**Guide Price - £450,000 to £475,000**  
**Welcome to the epitome of contemporary urban living in the heart of Stepney Green. Nestled within one of East London's most vibrant neighborhoods, this stylish two-bedroom, one-bathroom apartment offers a perfect blend of comfort, convenience, and sophistication.**



## Leasehold

- Two Double Bedrooms
- Close To Amneties
- Minutes From Stepney Green Park
- Close To Stepney Green Station
- Modern Apartment
- Private Balcony
- Duel Aspect

Situated in Stepney Green, known for its eclectic mix of cultures, trendy cafes, and bustling markets, this apartment is at the center of it all. With convenient access to transportation links, including Stepney Green Underground Station just a stone's throw away, commuting around London is a breeze. Whether you're seeking the tranquility of nearby parks or the excitement of the city center, Stepney Green offers the best of both worlds.

**Interior:**  
Step into a thoughtfully designed living space characterized by sleek modern finishes and ample natural light. The open-plan layout seamlessly connects the living, dining, and kitchen areas, creating an inviting atmosphere for both relaxation and entertainment.

The fully-equipped kitchen boasts contemporary appliances and ample storage space, making meal preparation a joy.

The two bedrooms offer comfortable retreats, each adorned with plush carpeting and large windows that frame views of the surrounding neighborhood.

The highlight of this apartment is undoubtedly the private balcony, providing a serene outdoor oasis perfect for enjoying morning coffee or evening cocktails while soaking in the sights and sounds of Stepney Green.

**Neighborhood:**  
Stepney Green is renowned for its vibrant atmosphere and diverse community. Explore the neighborhood's eclectic array of eateries, from trendy cafes serving artisanal coffee to authentic international cuisine.





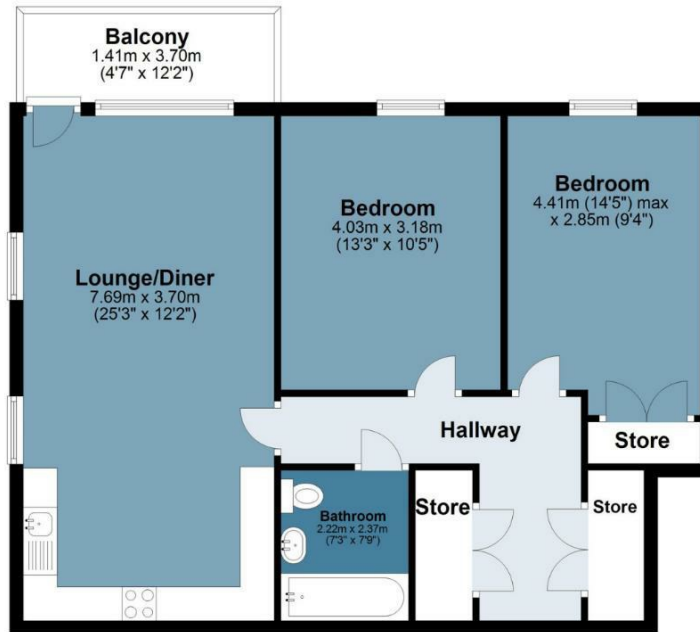
## Silk House

**BUTLER & STAG**

Approx. Gross Internal Area 72.1sq. metres (775.7 sq. feet)

### Second Floor

Approx. 72.1 sq. metres (775.7 sq. feet)



Measurements are approximate and for illustration purposes only. While we do not doubt the accuracy and completeness, we advise you conduct a careful independent assessment of the property to determine monetary value  
© @modephotouk www.modephoto.co.uk

**BUTLER & STAG**

☎ 020 8102 1236

🏠 508 Roman Road, Bow, London, E3 5LU

✉ bow@butlerandstag.com

[www.butlerandstag.uk](http://www.butlerandstag.uk)

IMPORTANT NOTICE - These particulars have been prepared in good faith and they are not intended to constitute part of an offer or contract. We have not performed a structural survey on this property and the services, appliances and specific fittings have not been tested. All photographs, measurements, floor plans and distances referred to are given as a guide and should not be relied upon.